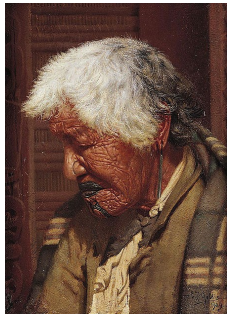


Year Planner 2016

Week	Term One	Term Two	Term Three	Term Four	
1	Induction	induction	induction	Revision	
2	Kei te kura / Kei te kainga / THM/AME Books/ vocab	THM/ Wharekura/ Whakatauki/ kiwaha/pepeha/	THM/creative writings / Tau- patupatu/ Te Ao Taiohi / Koro- neihana / Matari- ki / Te Wiki o te Reo Maori /	Revision	
3				Revision	
4				Revision	
5				Assessment 1.1	
6	Whakapapa/ whanau/THM/ Hui/Marae/ pohiri/	Assessment 1.5	School Examinations		
7					
8				Tuhituhi topics / THM/	tuhinga
9					tuhinga
10	Assessment 1.2		tuhinga		
11					

Planner is indication only and may change.



Future job prospects for those who partake in te reo Maori:

Travel Consultant, Interpreter, Event Manager, Television Presenter, Actor, Police Officer, Policy Analyst, Author, Film Producer, Teacher, Nurse, Midwife, Curator, Sociologist, Psychiatrist, Linguist and many more.

Ko toku reo toku ohooho, ko toku reo toku mapihi maurea, ko toku reo toku whakakai marihi
(My awakening language is my strength, my language is my grace)

Te Kareti o Tawa

Te Tari Māori o Tawa Te Reo Māori Department



Ko te manu kai i te miro, nōna te ngāhere, ko te manu kai i te matauranga nōna te ao.
(The bird that eats the miro berry shall own the forest, the bird that eats knowledge shall own the world)

Te Reo Māori NCEA L1 Course information booklet 2016

Te Reo Maori

Te reo Maori is included in learning languages which is one of the eight learning areas in the New Zealand curriculum. It emphasizes the inseparable links between language, culture, and identity. As students learn te reo Maori, they also deepen their knowledge and understanding of tikanga, and reo (language).

NCEA Level one te reo Maori students are working at levels 6 of the New Zealand curriculum. The main objective this year is to guide and develop personal independence in the language. Students will be working towards using language effectively to help in possible socio-cultural themes such as directions, whare wahanga, tikanga, karanga, whaikorero Maori arts and crafts to name a few.

At the end of the year you will be able to demonstrate:

- ◇ Give and follow instructions
- ◇ Communicate about problems and solutions
- ◇ Communicate about immediate plans, hopes, wishes and intentions.
- ◇ Communicate in formal situations.

In this course you will be required to listen, speak, read and write from material supplied to you. Identifying the important features and describing aspects of the language form.

Assessment Specifications 2016

- ◇ At Home (*cultural practices in the home, household chores, features and layout*)
- ◇ At School (*every day activities, cultural practices at school, sports at school*)
- ◇ The Teenage World (*organizing and participating in leisure activities, communicating technology—cell phones, facebook, email, internet*)
- ◇ At the marae (*practices and protocols of the marae courtyard, meeting house and dining rooms, marae events, a marae event that the student attended*)

Stationery Needs

- ◇ Plastic document wallet (for handouts/worksheets)
- ◇ 3x 1B8 Lined exercise book (all written notes to be written inside)
- ◇ Ngata / Ryans dictionary

Homework Expectations

This course covers a lot of content material. In order to keep up and successfully complete assessments it is compulsory that you regularly complete readings, writings, and speaking activities set as work in your own time. It is your

responsibility to complete work on time and to catch up on any work you have missed.

Assessment - NCEA Level One

Achievement Standards

- 91085 1.1 Whakarongo kia mohio ki te reo o tona ao (6 credits) (Internal)
- 91087 1.3 Panui kia mohio ki te reo o tona ao mohio (6 credits)
- 91088 1.4 Tuhi i te reo o tona ao mohio (6credits)
- 91089 1.5 Waihanga tuhinga i te reo o tona ao (6 credits) (Internal)

Assessment Schedule

Standard	Standard Title	Version	Credits	Assessment period	Assessment format
91085	Taringa Whakarongo	3	6	Term 1	listening
91087	Panui (external)		6	Term 3/4	Reading
91088	Tuhi (external)		6	Term 3/4	Writing
91089	Tihei Mauriora!		6	Term2	Creative writing

Schedule is for indication only and may change.



For any enquiries about this course or information please contact Te Reo Maori Head of Department jrangihacata@tawacollege.school.nz or phone 04-2328184 ext:891