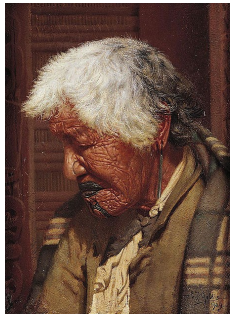


Year Planner 2016

Week	Term One	Term Two	Term Three	Term Four
1	Induction	induction	induction	Revision
2		tuhi	panui	Revision
3	Assessment 3.1	tuhi	panui	Revision
4	Introduction	tuhi	panui	Revision
5	korero	tuhi	tuhinga	
6	korero	tuhi	tuhinga	
7	korero	tuhi	School Examinations	
8	korero	Assessment 3.5	tuhinga	
9	Assessment 3.2	Assessment 3.5	tuhinga	
10	Assessment	resits	tuhinga	
11			mocks	

Planner is indication only and may change.



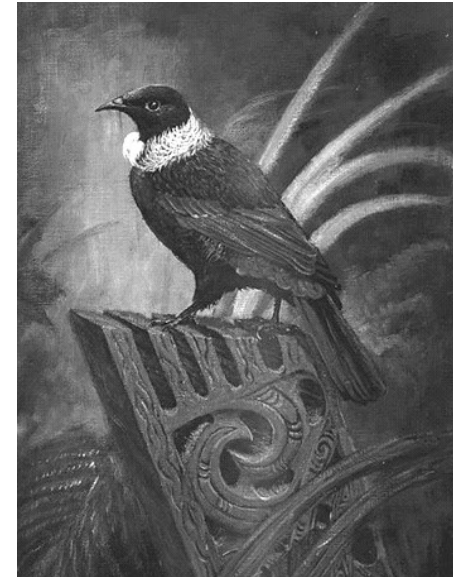
Future job prospects for those who partake in te reo Maori:

Travel Consultant, Interpreter, Event Manager, Television Presenter, Actor, Police Officer, Policy Analyst, Author, Film Producer, Teacher, Nurse, Midwife, Curator, Sociologist, Psychiatrist, Linguist and many more.

Ko toku reo toku ohooho, ko toku reo toku mapihi maurea, ko toku reo toku whakakai marihi
(My awakening language is my strength, my language is my grace)

Te Kareti o Tawa

Te Tari Māori o Tawa Te Reo Māori Department



Ko te manu kai i te miro, nōna te ngāhere, ko te manu kai i te matauranga nōna te ao.
(The bird that eats the miro berry shall own the forest, the bird that eats knowledge shall own the world)

Te Reo Māori NCEA L3 Course information booklet 2016

Te Reo Maori

Te reo Maori is included in learning languages which is one of the eight learning areas in the New Zealand curriculum. It emphasizes the inseparable links between language, culture, and identity. As students learn te reo Maori, they also deepen their knowledge and understanding of tikanga, reo, and whanau.

NCEA Level three te reo Maori we are working at levels 8 of the New Zealand curriculum. The main objective this year is to develop personal independence in the language. You will be working towards using language effectively to express and justify own ideas, opinions, and support or challenge those of others.

At the end of the year you will be able to demonstrate:

- ◇ Developing an argument or point of view with reason.
- ◇ Respond to selected and adapted texts in te reo Maori and English.
- ◇ Recount a series of events to inform, persuade, or entertain.

In this course you will be required to listen, speak, read and write from material supplied to you. Identifying the important features and describing aspects of the language form.

Assessment Specifications 2016

- ◇ Tribal ancestral stories prior to 1900 (*stories from within your tribe*)
- ◇ Waiata / Haka (*a waiata/haka composed after the year 1900*)
- ◇ Te Reo Rangatira (*an initiative / strategy to support the revitalisation of the Maori language*)
- ◇ A political worldview (*a political issue concerning the community, Maori people, New Zealand in general*)

Stationery Needs

- ◇ Plastic document wallet (for handouts/worksheets)
- ◇ 3x 1B8 Lined exercise book (all written notes to be written inside)
- ◇ Ngata / Wiremu Dictionary

Homework Expectations

This course covers a lot of content material. In order to keep up and successfully complete assessments it is compulsory that you regularly complete readings, writings, and speaking activities set as work in your own time. It is your

responsibility to complete work on time and to catch up on any work you have missed.

Assessment - NCEA Level Three

Achievement Standards

- 90542 3.1 Whakarongo i te reo o te ao whanui (4 credits)
- 90781 3.3 Panui kia whai maramatanga i te reo o te ao whanui (3 credits)
- 90782 3.4 Whakaoti tuinga okawa i te reo o te ao whanui (4credits)
- 90783 3.5 Hanga tuinga auaha i te reo o te ao whanui (4 credits)

Assessment Schedule

Standard	Standard Title	Version	Credits	Assessment period	Assessment format
90542	Whakarongo Mai	2	4	Term 1	listening
90781	Panui (external)	1	3	Term 3/4	Reading
90782	Tuhituhi (external)	1	4	Term 3/4	Writing
90783	Waihanga Tuinga	1	4	Term2	Creative writing

Schedule is for indication only and may change.



For any enquiries about this course or information please contact Te Reo Maori Head of Department jrangihaeata@tawacollege.school.nz or phone 04-2328184